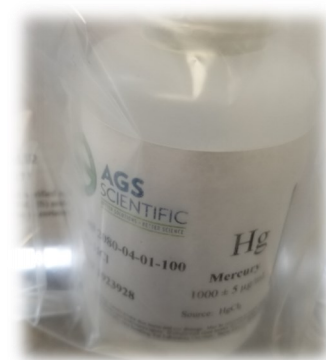


Meeting the Challenges of Measuring Ultra-Trace Levels of Mercury (Hg) in Waters Using USEPA Method 1631E

USEPA Method 1631E utilizes Atomic Fluorescence Spectroscopy (AFS) measuring down to 0.5 ppt of Hg, or lower. The most difficult issue with this method is the ease of contamination from sample collection through analysis. AGS Scientific offers a variety of solutions to ease your mind and help you to achieve highly reliable results.

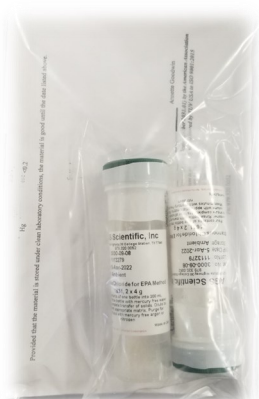
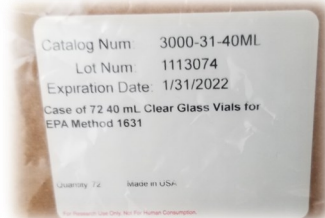
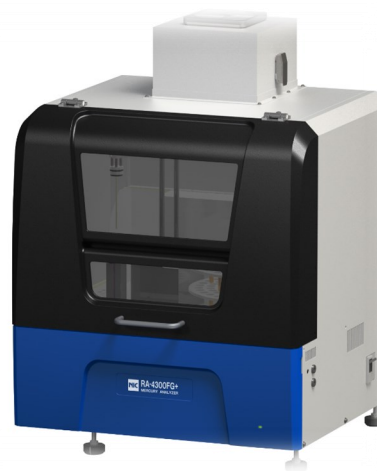


Certified Mercury Standard Solution

- Highly robust certified standard made with the most stable form of inorganic mercury
- Combine with our recommended preservative technique to make ppb standards that last for months!

Model RA-4300FG+ CVAFS Mercury Analyzer

- Built-in reagent purging system to keep reagents clean during analysis
- HEPA / Carbon Filtration System to maintain a "clean room" environment
- Requires only 5 mL of sample with low reagent use and low generation of waste
- Automated quenching of BrCl followed by analysis, reducing labor and improving efficiency in the lab



Sample and Reagent Kits Specific for EPA Method 1631E

- Sample collection kits for 1631E
- Reagent kits for 1631E
- Trace Metal Grade Acids
- Digestion tubes for 1631E
- Gloves for 1631E



Contact Us Today For More Information!