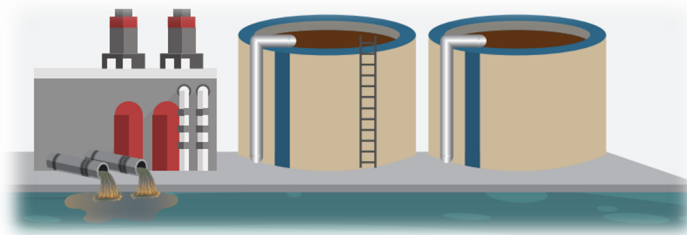


## Solutions for Monitoring Mercury (Hg) in Wastewater (USEPA Method 245.1 and other Regulatory Methods)

Mercury waste generated from various industries and discharged into streams, lakes, rivers and other water sources must be closely monitored. Cold Vapor Atomic Absorption Spectroscopy (CVAAS) is a well known technique for measuring trace levels of Hg.

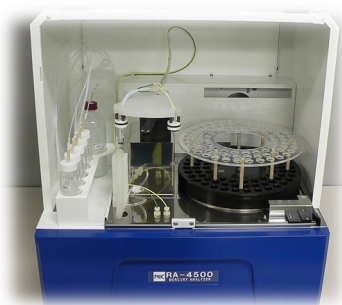


### Model RA-5000 Series Direct Purge CVAAS Mercury Analyzer

- Economical, entry-level modular direct purge CVAAS system
- No gases needed with low reagent use and low generation of waste
- Analytical Range: 0.5 ppt to 400 ppb

### Model RA-4300A CVAAS Mercury Analyzer

- High Throughput Direct Purge CVAAS Hg Analyzer
- Optional QC Software package specifically designed to meet the QC guidelines of USEPA Method 245.1
- Requires only 5 mL of sample with low reagent use and low generation of waste



### Model RA-4500 for Fully Automated Digestion and Analysis

- Complete automated sample processing, including hot block digestion, followed by CVAAS analysis without any user intervention
- Low reagent use and low waste generation
- Easy-to-Use Intuitive software (Optional QC package)



**Contact Us Today For More Information!**